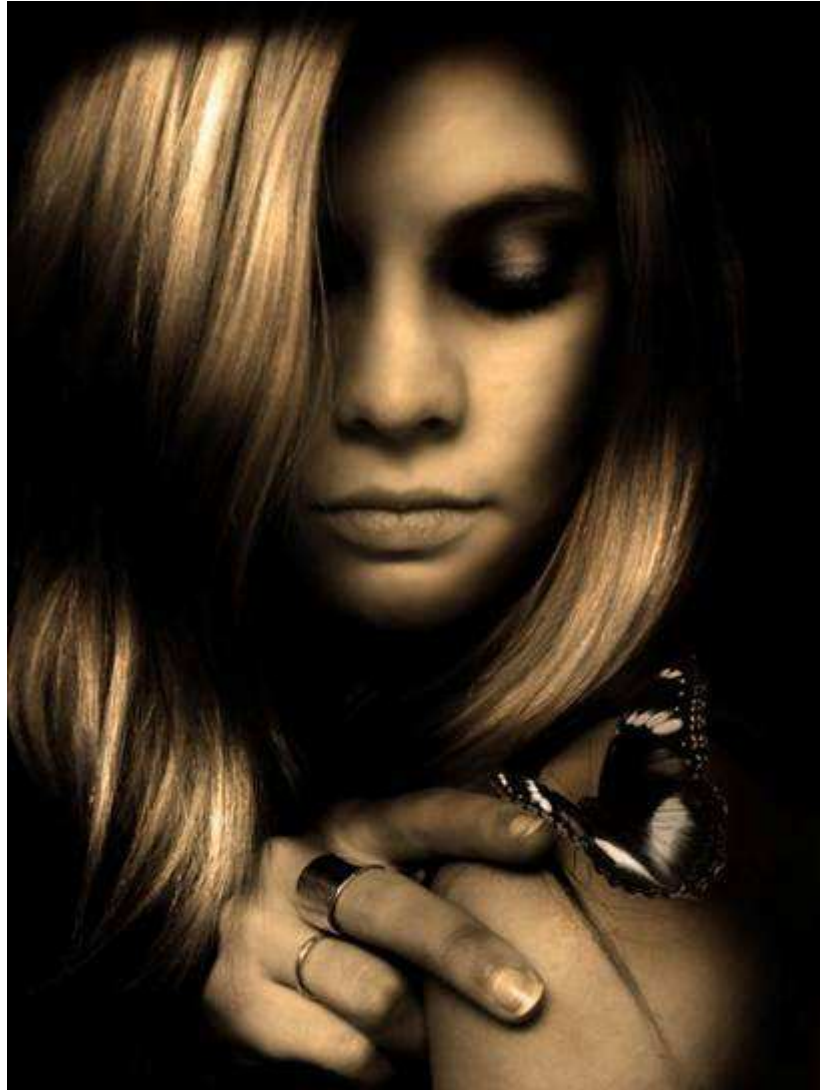


## Y12 PHOTOGRAPHY



To create the soft effect of this image, I used natural lighting with the camera on a tripod. The image was then processed in Photoshop where I created darkness and a golden glow to create tone and the mood. The butterfly was photo manipulated from a previous photograph I took down at the butterfly emporium in Sydney. Overall, the processing of this image took about 2 hours.

**Teegan Pack**  
**Y12 Photography Student**  
**Model: Briana McGuinness**

Tomaree High School

*Forward Together >>>*

## Principals Notes

It is with great pleasure that I am writing this edition of the newsletter as Relieving Principal. Rob is currently on secondment to Newcastle District Office as Relieving Secondary Education Director for Newcastle. He will return at the start of next term and I have appreciated the opportunity that has been given to me. This school has been my focus for more years than I care to remember and the chance to be at the helm is one to relish.

## Uniform

A copy of the Uniform Policy for next year has been included in this newsletter which is mailed out to all families. We have had a real push this term with shoes and it has been a difficult issue. Our uniform from the "ankles up" is generally outstanding but shoes are still a significant issue with some students. With the change in policy this should not be the story next year. You will also see the introduction of a "modesty clause" for our young ladies who wish to wear shorts and we will now insist on "mid thigh" shorts, to ensure the wrong messages are not being sent.

In the office at present there are six near new knitted school jumpers that have been left around the school and probably will not be missed until the next cold snap. If you are missing one, get your child to call at the office.

## Y12

There are only a few days of regular lessons left for our Y12 students. Their formal farewell assembly will be held on Wednesday of next week. It only seems like yesterday when these youngsters were in Y7 being addressed, by their then Deputy Principals, Ms McLaughlan and Mr McDonald in the MPC. Now they have finished all of their major assessments and can concentrate on preparing for their external exams, which commence in a little over three weeks time.

I had the privilege of viewing some of the major works completed by our HSC students and I could not help but be "gob smacked" by the quality of some of the works submitted this year. They are certainly a talented bunch and their teachers should proud be of both their students and themselves for their achievement. Most weekends this term, when I have had to come into school, I found Y12 staff here with their classes working on some kind of major work or submission. This is the quality service and dedication given by our staff that will assist students attain their best results.

I know that Mr Wagland is very proud of his "troops" and he has certainly put in a huge effort over the years to assist them to this point in their lives. He picked them up as Year Adviser in Year 8 and has never left their side despite all of the tears, tantrums and traumas. I would like to take this opportunity to congratulate him on a job "well done!" Ms Pfeffer, as their Deputy Principal, has also been institutional in guiding them through this final year.

## NAPLAN

Parents of students in Y7 and Y9 should have received reports on the results of the National Assessment Program-Literacy and Numeracy. This is the second year of this testing and staff will now analyse the results closely to determine areas for development.

## Digital Education Revolution - Laptops For Learning

Our new Technical Support Officer, Ron Lighton has been appointed to our school and has commenced duty. Ron's role will be to assist in the roll-out of the laptops to our Y9 students next term and to provide on-going technical support. To assist him in this immense task, a TSO Cadet, Adam Paule-Font, has also been appointed. Our wireless network is almost complete and we look forward, with great anticipation, to the computers arriving next term. They are great little units with an excellent suite of software on them including Blue Tooth. They will certainly change the mode of learning delivery in the future.

## Keeping Safe Online

A number of parents have spoken to me about the issue of cyber bullying and methods that can be used to protect their children from such a situation. The difficulty is that this can be a 24/7 situation and there is often no escape. It is also different in that every time the student views the message the bullying is reinforced. Students should know how to block sites and parents need to keep an eye on their children's on-line activities. If it occurs at school it must be reported and it will be dealt with under our Anti-Bullying Policy. Outside of school it could become a police matter. Y9 students have been issued with the latest Click magazine which has some excellent advice on cyber safety and it can be found online at [www.schools.nsw.edu.au/click](http://www.schools.nsw.edu.au/click)

**Keith Freeman**  
Relieving Principal

### KEEL STREET GATE CLOSURE TIMES DURING SCHOOL HOURS

Days	Opened	Closed	Opened
Monday	7.45am	9.40am	2.30pm
Tuesday	7.45am	9.40am	2.30pm
Wednesday	7.45am	9.40am	11.45am
Thursday	7.45am	9.40am	2.30pm
Friday	7.45am	9.40am	2.30pm

## Calendar

### Term 3 2009

#### Week 10

28th Sep	6-12pm Y12 Scavenger Hunt
29th Sep	Y12 Muck Up Day at Battlezone
30th Sep	9.30-11am Y12 Presentation Day
1st Oct	Last day Y12
2nd Oct	Last Day Term 3

### Term 4 2009

#### Week 1

19th Oct	Trial School Certificate Exams Begin
	All Students Return to School
23rd Sep	HSC Exams Begin

#### Week 2

26th Oct	Y7 Hep B & Y7 Girls HPV Vaccinations
27th Oct	7pm P & C Meeting

## Maths Matters

### Reminder - Free Maths Tutoring

Leading into the HSC, students have the availability of a great website to assist revision and homework at [www.mathsonline.com.au](http://www.mathsonline.com.au).

This website contains an actual video explanation on how to do topics, with worksheets, solutions and a lesson summary all able to be printed off.

You do not need a password to use the site, even though all Tomaree HS students have been given a username and password to access the site. It is only necessary for keeping details of what activities you have done. Use the "TRY IT" section if a student does not have a password or username.

This is the best website I have seen and is available free to our students due to corporate sponsorship.

## Y12

The Mathematics faculty of Tomaree High School wishes you all the best with your HSC and will be providing extra assistance during the holidays and early next term to enable you to get the best result possible.

Something to remember:

## Winner's Creed

If you think you are beaten, you are  
If you think you are not, you don't  
If you would like to win but think you can't  
You almost certainly won't.

If you think you'll lose, you've lost  
For out in the world you'll find  
Success begins with a fellow's will  
It's all in the state of mind.

For many a race is lost  
Before a step is run  
And many a coward fails  
Before his work has begun.

Think big and your deeds will grow  
Think small and you will fall behind  
Think that you can and you will  
It's all in the state of mind.

Life's battles don't always go  
To the stronger or faster man  
But sooner or later the man who wins  
Is the fellow who thinks he can.

**Rod Lyon**  
**Head Teacher Mathematics**

## Careers News

**Y10 students** have the option to complete a week's **Work Experience** during Term 4 between **23<sup>rd</sup> and 27<sup>th</sup> November**. Students need to source a suitable employer NOW. Documentation can be collected from me at the top of H block. Paperwork must be completed by students, parents, employer and the school before work experience can happen. Happy hunting!

**Robyn Nichols**  
**Careers Adviser**

## Defence News

I'd like to take this opportunity to wish all Y12s **GOODLUCK** with their HSC.

As the postings for this year are out I would ask that anyone posted in 2010 please let me know early Term 4.

**Debra Mould**  
**Defence Transition Mentor**

## Y7 Assessment Schedule Term 4 2009

	Course	Task	Weight
Week 1	PDHPE	Semester progressive skill based assessment	25%
	PDHPE	Semester progressive participation based assessment	25%
Week 3	English	Picture Book Composition 7WALK/Film Speech 7JUMP	25%
	Art	Creepy Creatures Sculpture	TBA
Week 4	Music	Yearly Exam	TBA
	Science	Test Week	TBA
	PDHPE	Puberty Blues	25%
	Maths	End of Semester Exam	TBA
Week 5	Technology	Food and Textiles Technology Folios	TBA
	Music	Performance	TBA

## Y8 Assessment Schedule Term 4 2009

	Course	Task	Weight
Week 1	PDHPE	Semester progressive skill based assessment	25%
	Art 4,1,11	Ordinary into Extra-ordinary Sculpture	TBA
	Agriculture	Garden Assessment	TBA
	PDHPE	Semester progressive participation based assessment	25%
Week 3	English	Director's Notes 8JUMP/Superhero Episode 8WALK	25%
	Science	Project Due	TBA
Week 4	French	Paris Project	10%
	PDHPE	Harm Task - Sexual Health / Sun Safety / Drug use	25%
	Maths	End of Semester Exam	TBA
	Science	Test Week	TBA
	French	Yearly Exams in Class Time	40%
	Technology	Food and Textiles Technology Folios	TBA
Week 5	Agriculture	Final Assessment Due	TBA
	Science	ESSA External Test this Week	NA

## Y9 Assessment Schedule Term 4 2009

	Course	Task	Weight
Week 1	PDHPE	Semester progressive skill based assessment	25%
	PDHPE	Semester Progressive Participation Based Assessment	25%
	Food Technology	Lets Party Folio	TBA
Week 2	Caring for children	Teddy Bear Assessment Task	TBA
Week 3	English	Transformation Unit Speech	35%
	Drama	Theatre Review	15%
	Music	Research Assignment	TBA
	Maths	End of Semester Exam	TBA
	PDHPE	Body Image Assignment - poster, analysis, letter	25%
Week 4	Art	Homework Assignment	TBA
	French	Term 3-4 Assignment	10%
	French	Yearly Exams in Class Time	40%
	Agriculture	Yearly Exams in Class Time	TBA
	Music	Yearly Exams in Class Time	TBA
Week 5	Science	Yearly Exams in Class Time	TBA
	Design and Technology	Progress Check on Christmas Unit Folio	TBA
	Art	BOW + Visual Diary	TBA
	Drama	Film Clip Task	20%
	PASS	Issues in Sport	25%
Week 6	Music	Performance	TBA
	Visual Design	BOW + Journal	30%

## Y10 Assessment Schedule Term 4 2009

	Course	Task	Weight
Week 1	English	Trial School Certificate	30%
	Mathematics	End of Semester 2 Test	30%
	Science	Field Report	10%
	Science	Trial School Certificate	40%
	Geography	Trial School Certificate / Yearly Exam	30%
	History	Trial School Certificate / Yearly Exam	20%
	Commerce	Yearly Exam	20%
	Music	Performance 3	10%
	Music	Yearly Exam	20%
	Marine and Aqua Tech	Practical Project 3 - Water Craft Construction	25%
	Y10 PDHPE / PASS	Semester Progressive Skill Based Assessment	20%
	Y10 PDHPE / PASS	Class Work progressive assessment	10%
	Y10 PDHPE / PASS	Semester progressive participation based assessment	20%
	Week 2	Drama	Yearly Exam and Non Realism Study
Industrial Technology - Timber		Semester 2 Test	20%
Design and Technology		Semester 2 Test	20%
Dance		Yearly Exam	10%
Drama		Yearly Exam	30%
Visual Arts		Critical Historical Study	10%
Visual Design		Critical Historical Study	10%
Y10 PDHPE / PASS		No means no evaluate response	12.5%
Marine and Aqua Tech		Semester 2 Test	20%
Information and Software Technology		Integrated Project - One Stop Computers Webpage	20%
Week 3	Agriculture	Yearly Exam	35%
	Information and Software Technology	Yearly Exam	25%
Week 4	Science	Ecology Field Report Excursion to Fingal	TBA
	PASS	Finish of Coaching Task	12.5%
	Visual Arts	Body of Work and VAPD Exhibition	40%
Week 5	Food, Fashion & Computers	Design Task 3	40%
	Visual Design	Journal and Folio Review and Exhibition	40%

## Y11/12 Assessment Schedule Term 4 2009

	Course	Task	Weight
Week 2	English Advanced	Oral	10%
	English Standard	Oral	10%
Week 6	Chemistry	Research / Practical	10%
	Design and Technology	Major Project Proposal and Project Management	15%
	Drama	Australian Theatre Integrated Task	20%
	Information Processes and Technology	Database Project	20%
	Modern History	Source Analysis / Essay	15%
	Music 1	Musicology Research / Topic 1 Performance	15%
	PDHPE	Research Task	10%
	Society and Culture	Selected Country Study	20%
	Visual Arts	Diary / BOW / Class Test	5%
	Hospitality	Folio Part A	Comp
	Sport Lifestyle and Recreation	Outdoor Education Task	10%
Week 7	Ancient History	Structured Test Essay	15%
	Biology	Practical Assessment	10%
	Business Studies	Extended Response on Business Management and Change	20%
	Engineering Studies	Group Practical Task	20%
	Food Technology	Practical Task Nutrition	25%
	Industrial Technology	Design / Management Communication	22.5%
	Physics	Oral Presentation	10%
	Software Design and Development	Development and Impact of Software Solutions	20%
Week 8	Textiles and Design	MTP Report and Presentation	20%
	Mathematics 2unit	Task	10%
	Mathematics Extension 1	Task	10%
	Mathematics Extension 2	Task	10%
Week 9	Mathematics General	Task	10%
	Community and Family Studies	Independent Research Project	15%
	English Fundamentals	Oral	15%

**TOMAREE HIGH SCHOOL 2009 Y10 TRIAL SCHOOL CERTIFICATE EXAMINATIONS**

- The timetable below indicates when Y10 Trial School Certificate examinations and Yearly examinations are to be held in Weeks 1 and 2, Term 4. All Trial School Certificate examinations are held in the MPC.
- Special provisions students are to go to the H15 and H16 on Monday and DG1 or HG1 on Tuesday and Thursday for Trial School Certificate examinations.
- Y10 students are expected to attend normal lessons on days without Trial School Certificate exams.
- Yearly exams will be held in normal class time in normal classrooms unless otherwise instructed.
- **Y10 students MUST attend roll call during the examination period.**

**Term 4 Week 1**

MONDAY 19/10/09	TUESDAY 20/10/09	WEDNESDAY 21/10/09	THURSDAY 22/10/09	FRIDAY 23/10/09
<b>Trial School Certificate</b>  <b>Computing Skills</b> 8.45am to 10.00am <i>Students move into MPC at 8.30am</i>  Special Provisions students in H15 & H16 8.30am to 10.10am	<b>Trial School Certificate</b>  <b>English</b> 8.45am to 10.55am <i>Students move into MPC at 8.30am</i>  Special Provisions students in HG1 & DG1 8.45am to 11.15am	<b>Normal classes</b>	<b>Trial School Certificate</b>  <b>Mathematics</b> 8.45am to 10.50am <i>Students move into MPC at 8.30am</i>  Special Provisions students in HG1 & DG1 8.45am to 11.10am	<b>Normal classes</b>
<b>Normal classes periods 4 to 8</b>	<b>Science</b> 11.55am to 2.05pm  <i>Students move into MPC at 11.45am</i>  Special Provisions students in HG1 & DG1 11.55am to 2.25pm	<b>SPORT</b>	<b>Australian History &amp; Geography &amp; Civics</b> 11.55am to 2.05pm  <i>Students move into MPC at 11.45am</i>  Special Provisions students in HG1 & DG1 11.55am to 2.25pm	<b>Normal classes</b>

**TOMAREE HIGH  
UNIFORM SHOP  
STOCKTAKE  
SALE  
20% OFF ALL  
STOCK**

**STARTS MONDAY 21<sup>ST</sup> SEPTEMBER – 8am-12pm**  
**THURSDAY 24<sup>TH</sup> SEPTEMBER – 1-5pm**  
**MONDAY 28<sup>TH</sup> SEPTEMBER – 8am-12pm**  
**THURSDAY 1<sup>ST</sup> OCTOBER – 1-5pm**

**TOMAREE NEIGHBOURHOOD CENTRE INC**

*THE HEART OF THE COMMUNITY*

PO Box 68, SALAMANDER. 2317  
 PHONE (02) 4984 6220  
 EMAIL: [tomaree@bigpond.net.au](mailto:tomaree@bigpond.net.au)  
 FAX (02) 4984 621



**MEDIA RELEASE**

The Tomaree Neighbourhood Centre in partnership with Gan Gan Family Centre is pleased to offer a **FREE COURSE** for men and women planning to return to the workforce

**Life Skills Count Program**

In this program you will:

- Meet new people and expand your outlook on life
- Create your own portfolio
- Recognise life skills that can help you gain work
- Improve your self esteem and confidence
- Be helped to see the potential of what you already know and have done
- Get a clear picture of what you can do and discover your potential
- Receive help to decide what you want to do in the future

The course will be run over **7 consecutive Mondays - 2.5 hours per day** - Time - **12.00 to 2.30pm each day**  
 Venue - **Gan Gan Family Centre @ Anna Bay School**  
 For more information and bookings please contact Tomaree Neighbourhood Centre on 4984 6220.